

Merchandise Cart

CC-2FMC: Front Merchandise Cart

CC-2RMC: Rear Merchandise Cart

Besides our innovative food and beverage carts, we also offer a complete line of merchandise carts that will enhance the sales appeal of any type of goods.

Standard Features:

- Laminate body construction
- Laminate countertop with T-mold bumper edge
- 6" casters on steel frame (2 swivel w/side brakes, 2 rigid)
- Locking, sliding storage doors
- Built-in glass display case (Front Merchandise Cart Only)
- Display case lighting (Front Merchandise Cart Only)
- Laminate caster skirt
- Slat wall display area (Rear Merchandise Cart Only)

Optional Features:

- Custom laminate colors
- Solid surface countertop
- Black rubber caster skirt
- Cash drawer (Front Merchandise Cart Only)
- Display lighting (Rear Merchandise Cart Only)



Rear Merchandise Cart shown with custom laminate panel. Custom graphics available.

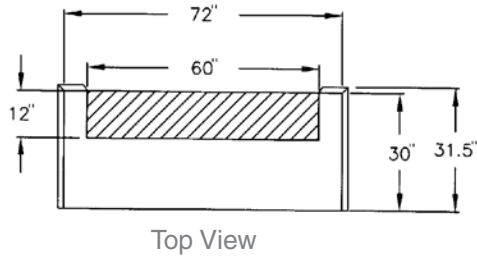
Front Merchandise Cart shown with custom laminate panel. Custom graphics available.

Merchandise Cart

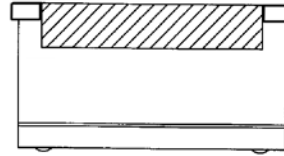
CC-2FMC: Front Merchandise Cart

CC-2RMC: Rear Merchandise Cart

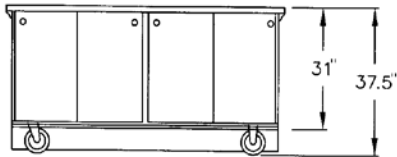
CC-2FMC: Front Merchandise Cart



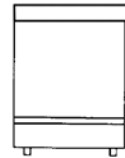
Top View



Front View

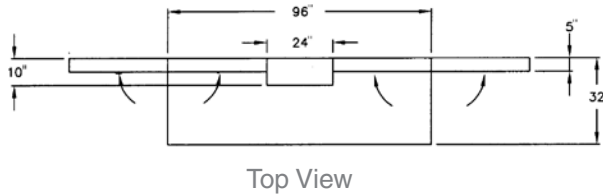


Operator's Side View

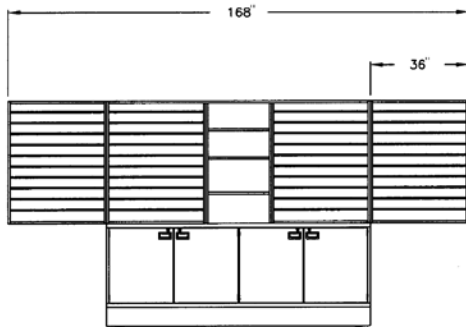


End View

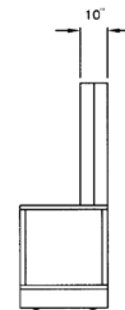
CC-2RMC: Rear Merchandise Cart



Top View



Operator's Side View



End View

The dimensions given are reference dimensions only. Critical dimensions should be brought to the attention of the salesperson. Due to a continuous program of product improvement, Carts of Colorado reserves the right to make product changes without notice.

Installation of electrical at site not included. Buyouts provided by others do not include electrical outlets unless specified on drawing. Electrical of over 120 volts/20 amps does not include cord or cap.

This document contains information that is confidential and proprietary to Carts of Colorado and shall not be reproduced or transferred to other documents or disclosed to others or used for any purpose other than that for which it was obtained without the expressed written consent of Carts of Colorado.

It is recommended that local building, health and zoning codes be researched prior to ordering. Due to a continuous program of product improvement, Carts of Colorado reserves the right to make changes in design and in specifications without notice.

5420 S. Quebec St.
Suite 204
Greenwood Village, CO 80111
(303) 329-0101
(800) 227-8634
Fax: (303) 329-6577
www.cartsofcolorado.com
sales@cartsofcolorado.com